



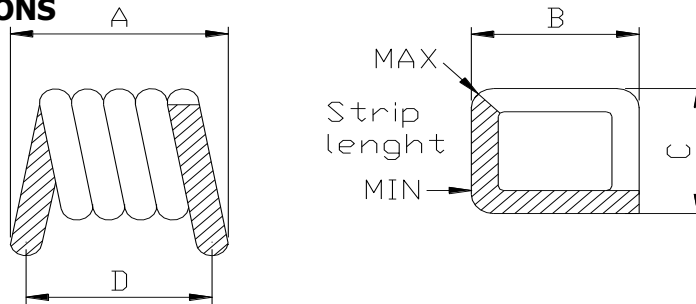
## SS0807 SERIES ~ Spring Air Core Inductors



### FEATURES

- SMD type air core inductor .
- Tape / Reel packaging available for auto-insertion .
- High Q coils .

### SHAPES AND DIMENSIONS

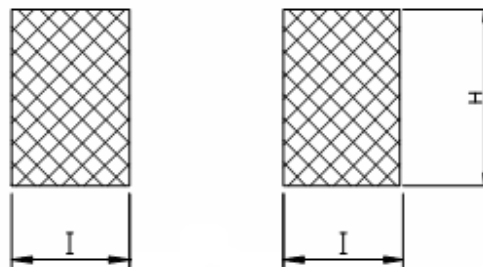


Dimensions(Unit:mm)

PART NUMBER	A	B	C	D
SS0807-6N9K-LF	1.295±0.102	1.829±0.254	1.524±0.254	1.02
SS0807-10NK-LF	1.626±0.152	1.829±0.254	1.524±0.254	1.32
SS0807-11NK-LF	1.549±0.152	1.829±0.254	1.524±0.254	1.24
SS0807-14NK-LF	1.930±0.152	1.829±0.254	1.524±0.254	1.63
SS0807-17NK-LF	2.286±0.152	1.829±0.254	1.524±0.254	1.96
SS0807-22NK-LF	2.591±0.152	1.829±0.254	1.524±0.254	2.29

### RECOMMENDED PATTERNS

UNIT : mm



H=2.6 Ref. I=0.51 Ref



## SS2012 SERIES ~ Spring Air Core Inductors

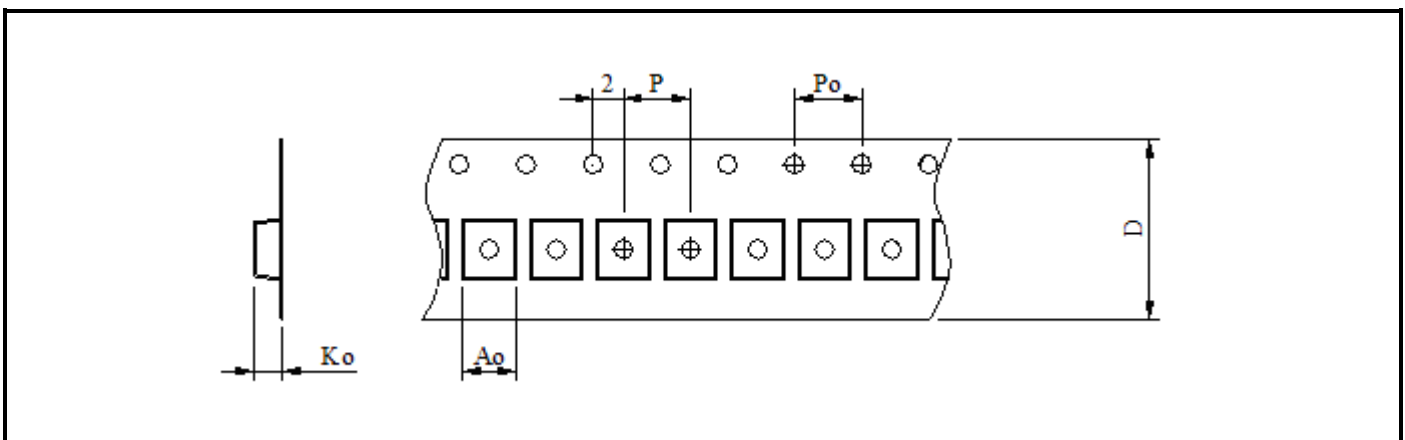


### ELECTRONICS SPECIFICATIONS

PART NUMBER	INDUCTANCE (nH)	TEST FREQ. (MHZ)	Q. (Typ.)	DCR (mΩ) (Max)	SRF (GHz) (Typ.)	I <sub>rms</sub> (A)
SS0807-6N9K-LF	6.9 ±10%	400	100	6.0	4.6	2.7
SS0807-10NK-LF	10.2 ±10%	400	100	7.0	4.0	2.7
SS0807-11NK-LF	11.2 ±10%	400	90	6.3	3.6	2.7
SS0807-14NK-LF	13.7 ±10%	400	100	8.0	4.3	2.7
SS0807-17NK-LF	17.0 ±10%	400	100	9.0	4.0	2.7
SS0807-22NK-LF	22.0 ±10%	400	100	10.0	3.5	2.7

\* Operating temperature range : -40°C to +125°C.

### PACKAGING SPECIFICATION



STAYLE	Q'TY (PCS)	DIMENSIONS (m/m)				
		Ao	Ko	P	Po	D±0.3
13"	6,000	2.2	1.5±0.18	4.0	4.0	12.0